

## PRODUCT

# RESOUND RS15S

## DESCRIPTION

SUBWOOFER

## SERIES

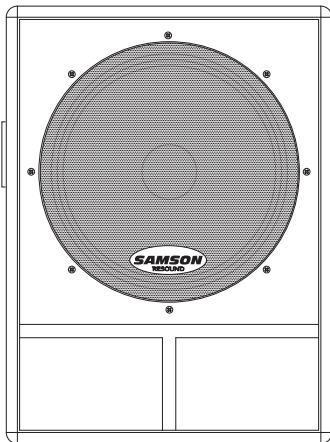
RESOUND

## CATEGORY

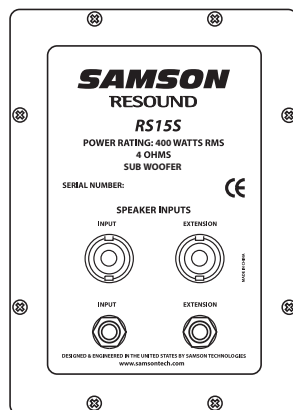
PUBLIC ADDRESS



FRONT PANEL



BACK PANEL



## GENERAL DESCRIPTION

The Resound RS15S subwoofer provides a perfect solution for adding low frequency extension to just about any PA system. By combining high power handling, satellite input filtering, along with quality speaker and cabinet components, the Resound RS15S provides serious bottom-end for any kind of live application. The low frequency drive units are constructed with heavy-duty steel and aluminum cast-frame baskets and feature large voice coils, massive magnets, impregnated cones and butyl surrounds. The RS15S enclosure has been carefully voiced for punchy and articulate low-frequency performance by employing a precision tuned shelf-port design. The result, the Resound RS15S offers slamming low-end that's deep and controlled. To make your connections simple, each Resound model provides both 1/4-inch and Neutrik Speakon® Input and Extension output connectors. The Extension Output is a full range output that can be used to connect a satellite speaker, or another Resound subwoofer. Each subwoofer cabinet has its own 12dB per octave, 180 Hz, Low Pass crossover to the low frequency driver. With the Resound, setup and break down is quick and easy. The compact cabinet includes a 1 3/8" (35mm) pole mount receptacle for mounting satellite speakers and are easy to transport thanks to the heavy-duty steel handles. Durable black carpet covering and heavy-gauge steel grills offer excellent protection against wear and tear. As fixed sound reinforcement or as a durable, great-sounding road PA, the Resound RS15S subwoofer is ideal for sound professionals and performers looking for serious low frequency output and studio monitor sound quality from a PA speaker system.

## FEATURES

- > Low Frequency Extension cabinet featuring high quality components and providing clean, articulate bass for any sound reinforcement system.
- > For extended bass response, the Resound sub-woofers utilize custom designed, heavy-duty, low-frequency drive units. The RS15S employs a 15-inch woofer.
- > The Resound series speakers carry high power ratings with an enormous 400 watts continuous power handling.
- > Neutrik Speakon® plus 1/4-inch Input connectors interface easily with most any power amp or powered mixer.

continues»

PRODUCT SPECIFICATION SHEET

SERIES  
**RESOUND**

DESCRIPTION  
**SUBWOOFER**

CATEGORY  
**PUBLIC ADDRESS**



**FEATURES** (continued)

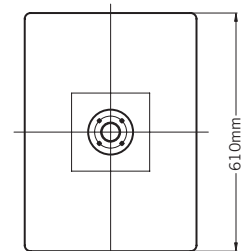
- > Neutrik Speakon® plus 1/4-inch Extension output connectors also allow you to “daisy-chain” multiple Resound models together to create larger sound reinforcement systems.
- > Internal 12dB per octave, 180 Hz, Low Pass crossover to the low frequency driver.
- > Standard 1 3/8-inch speaker stand receptacles for mounting mid-high satellite speakers.
- > Rugged, road-worthy carpet covered enclosures with steel speaker grills for high reliability.
- > Quality build and rugged construction ensure reliable performance from night-to-night and venue-to-venue.
- > Three-year extended warranty.

**ARCHITECT’S & ENGINEER’S SPECIFICATIONS**

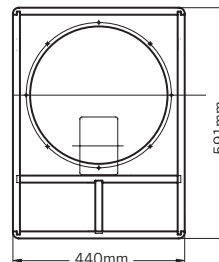
The Samson Resound RS15S sub shall be a 15 inch passive subwoofer. It shall have a continuous power rating of 400 watts. It shall have an impedance of 4 Ohms. The RS15S shall have a long excursion, low frequency driver with a 3 inch voice coil. It shall have 1/4 inch and speakon inputs on the rear panel.

**RS15S SPECIFICATIONS**

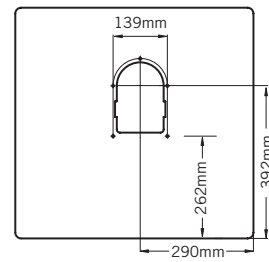
<b>Power Rating</b> (@ 4Ω).....	400 Watts RMS, 800 Watts Peak
<b>Nominal Impedance</b> .....	4 Ohms
<b>Frequency Response</b> .....	55Hz – 150 Hz ± 3 dB
<b>Sensitivity</b> .....	95 dB SPL @ 1W/1m
<b>MAX SPL</b> .....	120dB
<b>LF Driver</b> .....	15-inch heavy-duty driver
<b>Mounting</b> .....	Integral 1 3/8-inch Pole Mount Receptacle for satellite mounting
<b>Dimensions</b> (H x W x D) .....	23.3" x 17.3" x 24" 591mm x 440mm x 610mm
<b>Weight</b> .....	78 lbs. (35.45kg)



TOP



FRONT



SIDE